



Crop Monitoring Program

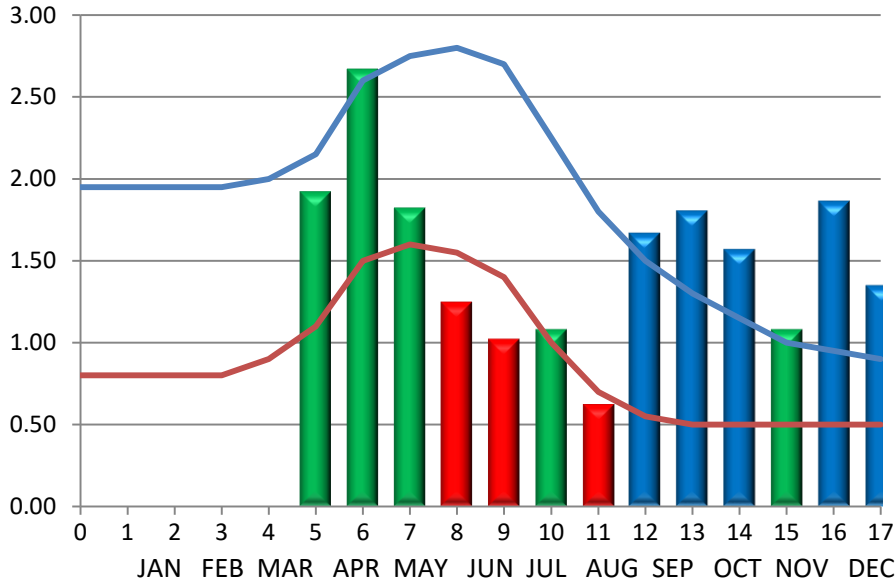
Strawberries



■ Above Optimal
 ■ Optimal
 ■ Warning
 ■ Low

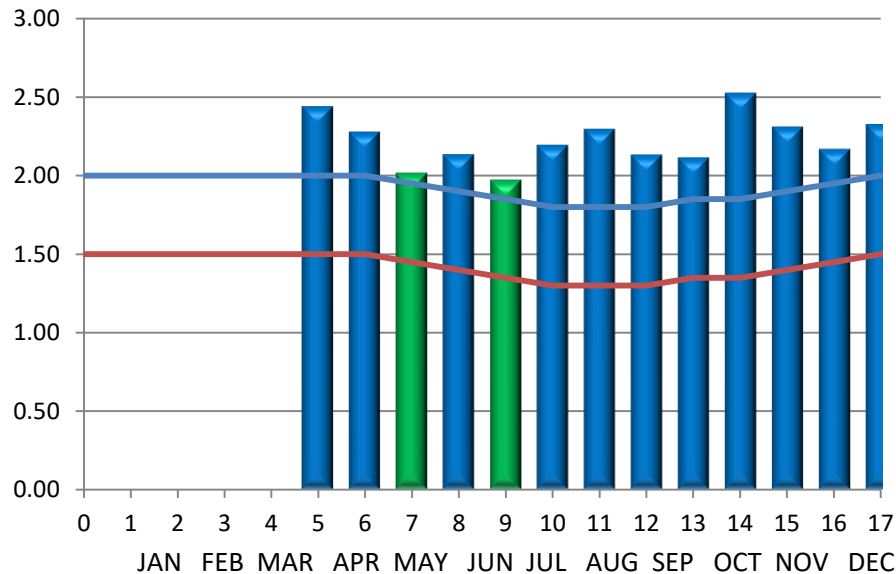
Nitrogen (PPM in 1000's)

○ 2018 ◆ 2019



S-P Date	NO3	PO4	%K	%Ca	%Mg	Zn	B	Fe	Mn	Cu	%S	%Na	%Cl	%N	
Optimal Zone				1.5	0.4	30	50	90	70	9	0.2	0.1	0.2		
1															
2															
3															
4															
5	4/15/20	1921	2439	3.57	0.91	0.28	15	41	93	137	4	0.19	0.01	0.30	2.97
6	4/28/20	2668	2278	3.46	1.25	0.36	19	44	80	160	4	0.21	0.01	0.33	3.44
7	5/11/20	1822	2017	3.04	1.12	0.28	16	50	109	177	4	0.20	0.01	0.41	2.53
8	5/26/20	1248	2135	3.28	1.51	0.34	15	55	114	155	3	0.19	0.01	0.69	2.67
9	6/8/20	1023	1973	2.98	1.39	0.31	15	48	155	125	3	0.20	0.01	0.58	2.36
10	6/25/20	1080	2195	2.80	2.42	0.36	14	55	210	410	3	0.20	0.01	1.02	2.55
11	7/7/20	624	2296	2.27	1.54	0.34	19	51	141	112	41	0.22	0.01	0.64	2.11
12	7/21/20	1670	2132	2.46	1.35	0.27	15	40	187	263	26	0.22	0.01	0.48	2.75
13	8/3/20	1806	2114	1.91	1.64	0.32	16	37	150	111	8	0.17	0.01	0.43	2.62
14	8/20/20	1571	2526	2.50	2.11	0.31	16	56	361	146	6	0.24	0.01	0.84	3.06
15	9/2/20	1081	2309	2.42	1.96	0.41	16	44	200	105	5	0.20	0.01	0.85	2.74
16	9/17/20	1866	2169	2.40	2.24	0.38	13	41	265	352	4	0.23	0.01	0.55	3.16
17	10/8/20	1351	2326	2.15	2.16	0.44	21	40	282	212	6	0.24	0.01	0.82	3.06

Phosphorus (PPM in 1000's)



Potassium (%)

