



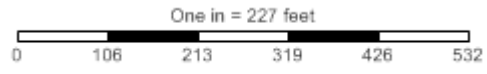
Grid Soil Sampling Report

Soil Test Points

Grower:
Farm:
Field:
Area: 28.30 ac



— Field Boundary



Results approved by _____
Date: _____

BRANCH NAME _____
CROP SOIL
TEST ID # 2555

GROWER/CLIENT _____



24730 Avenue 13
Madera, CA 93637
Phone: 559-661-6386
FAX: 559-661-6135

LOG IN #: _____
DATE SAMPLED: _____
DATE SUBMITTED: _____
DATE REPORTED: 7/9/2014

FIELDMAN _____

REPORT OF GRID SOIL ANALYSIS

FIELD _____

ACRES _____

Methods	S-1.00	S-1.10	S-1.20	----- Calc -----				Sum	S-1.60	S-3.10	S-4.10	S-5.10	S-11.10	----- S-6.10 -----				S-1.50	S-9.10			
ID#	SP	pH	ECe	----- % -----				me/100g CEC	FIZZ TEST	-----nutrients in parts per million ppm-----												OM
				BS Ca	BS Mg	BS Na	BS K		ESP	NO3-N	PO4-P	K	SO4-S	Zn	Mn	Fe	Cu	B	Cl	OM		
1	51	7.6	1.09	71.3	21.4	3.9	3.4	21.8	+++	2.4	5.4	21.3	293	40	1.6	2.9	21	1.4	0.20	1.80		
2	46	7.6	0.95	71.3	21.8	3.6	3.3	19.7	+++	2.2	8.0	22.0	255	25	1.4	3.8	18	1.0	0.16	2.00		
3	35	7.7	0.89	74.9	19.1	3.1	2.9	14.7	+++	2.3	3.7	17.2	167	16	1.3	1.8	14	0.7	0.15	1.69		
4	40	7.7	1.15	73.0	20.2	3.7	3.1	17.3	+++	2.4	8.2	19.5	209	28	1.4	2.1	15	0.9	0.15	3.49		
5	40	7.5	0.94	72.5	21.3	3.2	3.0	17.1	+++	2.1	4.2	18.7	202	15	1.3	2.6	15	0.9	0.18	1.55		
6	50	7.6	1.11	71.2	21.8	3.9	3.1	21.2	+++	2.4	9.7	21.2	256	37	1.4	2.4	18	1.2	0.17	2.90		
7	56	7.6	0.95	69.4	23.2	3.9	3.6	24.8	+++	2.5	7.4	21.9	345	31	1.3	3.1	21	1.5	0.17	1.83		
8	55	7.6	1.07	69.4	22.9	4.2	3.5	24.7	+++	2.7	5.6	19.3	340	42	1.3	3.7	19	1.6	0.18	2.62		
9	47	7.6	0.80	71.8	22.1	3.1	3.0	20.8	+++	2.1	4.0	16.2	240	18	0.9	2.5	16	1.2	0.15	1.49		
10	48	7.6	0.85	71.2	22.0	3.7	3.1	20.6	+++	2.4	4.4	16.8	251	23	1.1	2.5	17	1.1	0.15	1.66		
11	49	7.7	1.10	71.3	21.5	4.2	2.9	21.0	+++	2.8	7.8	19.0	240	42	1.2	2.2	19	1.2	0.16	2.37		

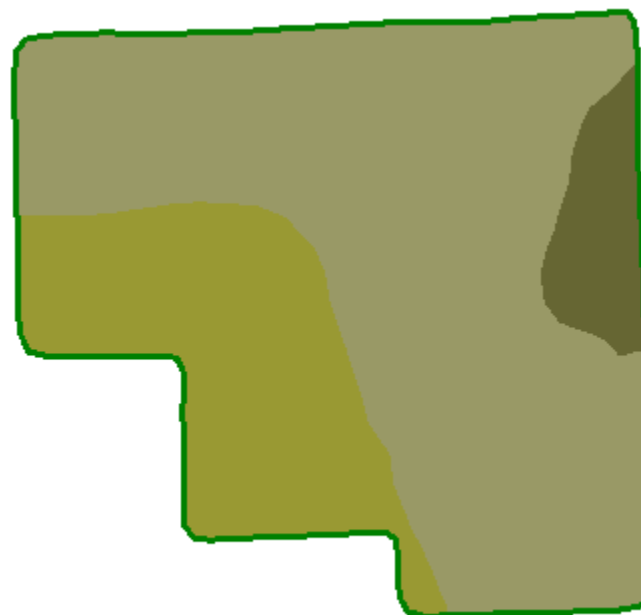
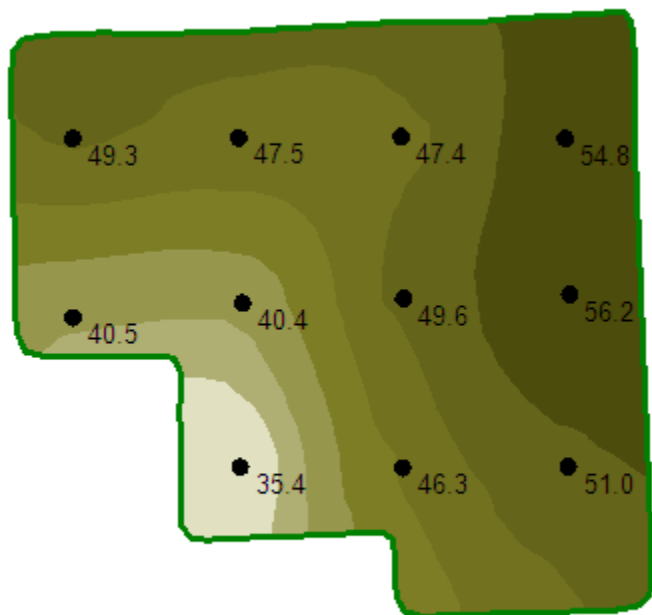
Summary Statistics for Grid Sampling Result

	SP	pH	ECe	BS Ca	BS Mg	BS Na	BS K	CEC	ESP	NO3-N	PO4-P	K	SO4-S	Zn	Mn	Fe	Cu	B	Total P	OM
Average	47.1	7.6	1.0	71.6	21.6	3.7	3.2	20.3	2.4	6.2	19.4	254	29	1.3	2.7	18	1.2	0.17		
Median	47.5	7.6	1.0	71.3	21.8	3.7	3.1	20.8	2.4	5.6	19.3	251	28	1.3	2.5	18	1.2	0.16		
Minimum	35.5	7.5	0.8	69.4	19.1	3.1	2.9	14.7	2.1	3.7	16.2	167	15	0.9	1.8	14	0.7	0.15		
Maximum	56.2	7.7	1.2	74.9	23.2	4.2	3.6	24.8	2.8	9.7	22.0	345	42	1.6	3.8	21	1.6	0.20		
Std. Dev.	6.3	0.0	0.1	1.5	1.1	0.4	0.2	3.1	0.2	2.1	2.1	55	10	0.2	0.6	2	0.3	0.02		

Methods from Plant, Soil and Water Reference Methods for the Western Region

Saturation Percentage - Absolute Variability (2014)

Saturation Percentage - Agronomic Variability (2014)



Grower:
 Farm:
 Field:
 Area: 28.30 ac

Season: 2014
 Min: 35.62 Percent
 Avg: 47.65 Percent
 Max: 56.28 Percent

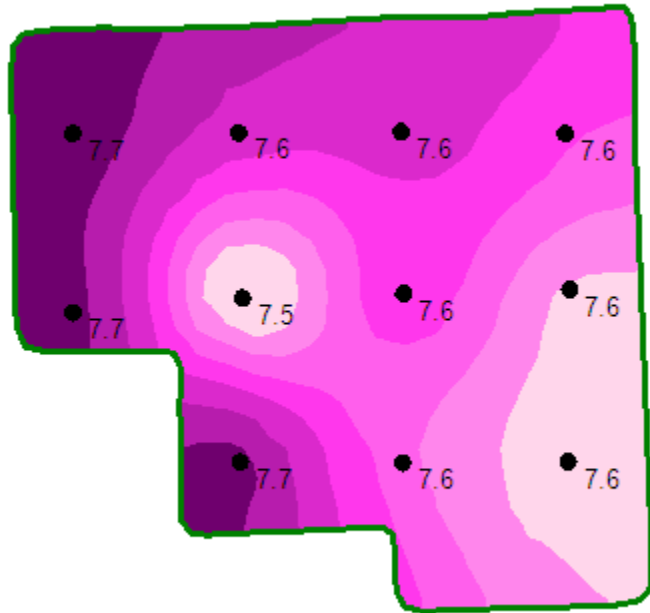
Season: 2014
 Min: 35.62 Percent
 Avg: 47.65 Percent
 Max: 56.28 Percent

Field Boundary	
Saturation Percentage - Absolute Variability Percent	
Lightest Yellow	36 - 38 (1.2 ac) (4.4 %)
Light Yellow	38 - 40 (1.3 ac) (4.6 %)
Yellow-Green	40 - 42 (2.5 ac) (8.7 %)
Yellow	43 - 46 (3.3 ac) (11.5 %)
Light Green	46 - 49 (6.6 ac) (23.4 %)
Green	49 - 52 (8.0 ac) (28.3 %)
Dark Green	52 - 56 (5.4 ac) (19.1 %)

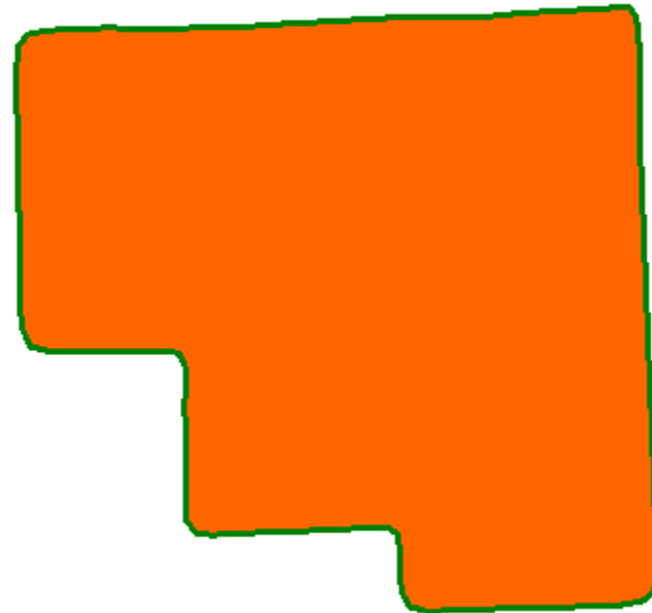
Field Boundary	
Saturation Percentage - Agronomic Variability Percent	
Lightest Yellow	0 - 20 Sand (0.0 ac) (0.0 %)
Light Yellow	20 - 25 Loamy Sand (0.0 ac) (0.0 %)
Yellow-Green	25 - 30 Sandy Loam (0.0 ac) (0.0 %)
Yellow	30 - 35 Loam (0.0 ac) (0.0 %)
Light Green	35 - 45 Silt Loam (7.6 ac) (27.0 %)
Green	45 - 55 Clay Loam (18.9 ac) (66.8 %)
Dark Green	55 - 85 Clay (1.7 ac) (6.2 %)
Black	> 85 Highly Organic (0.0 ac) (0.0 %)



Soil pH - Absolute Variability (2014)



Soil pH - Agronomic Variability (2014)



Grower:
 Farm:
 Field:
 Area: 28.30 ac

Season: 2014
 Min: 7.54 PH SCALE
 Avg: 7.60 PH SCALE
 Max: 7.68 PH SCALE

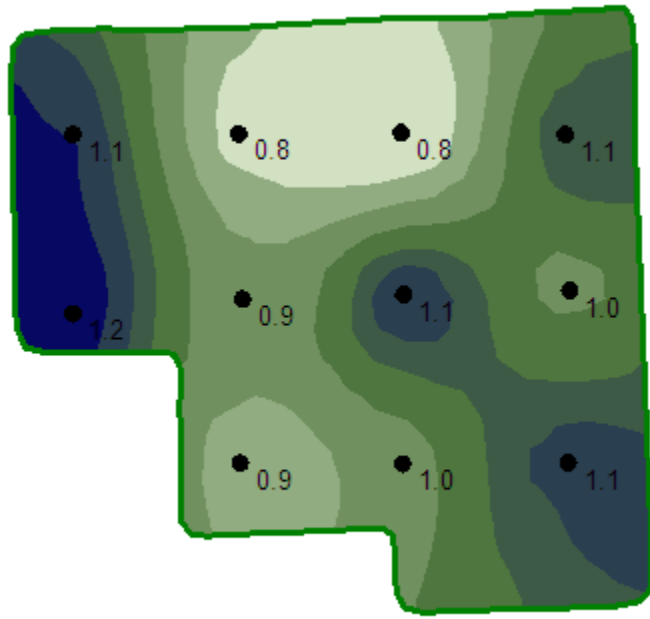
Season: 2014
 Min: 7.54 PH SCALE
 Avg: 7.60 PH SCALE
 Max: 7.68 PH SCALE

Field Boundary	
Soil pH - Absolute Variability PH SCALE	
Light Pink	7.5 - 7.6 (4.0 ac) (14.1 %)
Pink	7.6 - 7.6 (3.8 ac) (13.4 %)
Light Purple	7.6 - 7.6 (4.2 ac) (14.9 %)
Medium Purple	7.6 - 7.6 (5.3 ac) (18.9 %)
Dark Purple	7.6 - 7.6 (4.9 ac) (17.5 %)
Very Dark Purple	7.6 - 7.7 (2.6 ac) (9.1 %)
Black	7.7 - 7.7 (3.4 ac) (12.2 %)

Field Boundary	
Soil pH - Agronomic Variability PH SCALE	
Dark Purple	0.0 - 4.5 Very Acidic (0.0 ac) (0.0 %)
Medium Purple	4.5 - 5.0 Acidic (0.0 ac) (0.0 %)
Light Purple	5.0 - 6.0 (0.0 ac) (0.0 %)
Blue	6.0 - 6.8 (0.0 ac) (0.0 %)
Green	6.8 - 7.0 Neutral (0.0 ac) (0.0 %)
Yellow	7.0 - 7.2 (0.0 ac) (0.0 %)
Orange	7.2 - 7.8 (28.3 ac) (100.0 %)
Red	7.8 - 8.2 Very Alkaline (0.0 ac) (0.0 %)
Black	> 8.2 Sodic (0.0 ac) (0.0 %)



ECe (dS/m) - Absolute Variability (2014)



ECe (dS/m) - Agronomic Variability (2014)



Grower:
 Farm:
 Field:
 Area: 28.30 ac

 Season: 2014
 Min: 0.81 mS/meter
 Avg: 0.99 mS/meter
 Max: 1.15 mS/meter

 Season: 2014
 Min: 0.81 mS/meter
 Avg: 0.99 mS/meter
 Max: 1.15 mS/meter

	Field Boundary
ECe (dS/m) - Absolute Variability mS/meter	
	0.8 - 0.9 (3.3 ac) (11.6 %)
	0.9 - 0.9 (3.3 ac) (11.6 %)
	0.9 - 1 (6.2 ac) (21.7 %)
	1 - 1 (6.2 ac) (22.0 %)
	1 - 1.1 (5.0 ac) (17.5 %)
	1.1 - 1.1 (2.7 ac) (9.7 %)
	1.1 - 1.2 (1.7 ac) (6.0 %)

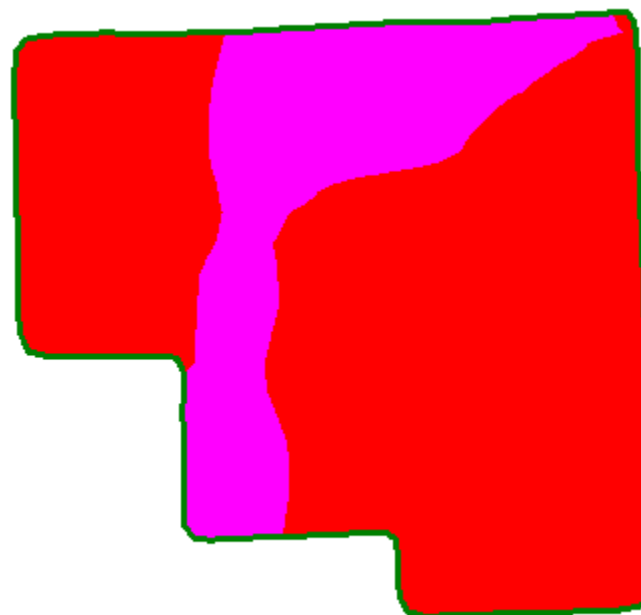
	Field Boundary
ECe (dS/m) - Agronomic Variability mS/meter	
	No Salinity (0.0 ac) (0.0 %)
	Low Salinity (14.6 ac) (51.6 %)
	Slight Salinity (13.7 ac) (48.4 %)
	Saline (0.0 ac) (0.0 %)
	Moderate Salinity (0.0 ac) (0.0 %)
	High Salinity (0.0 ac) (0.0 %)
	Excessive Salinity (0.0 ac) (0.0 %)



NO3-N - Absolute Variability (2014)



NO3-N - Agronomic Variability (2014)



Grower:
Farm:
Field:
Area: 28.30 ac

Season: 2014
Min: 3.99 ppm
Avg: 6.11 ppm
Max: 9.41 ppm

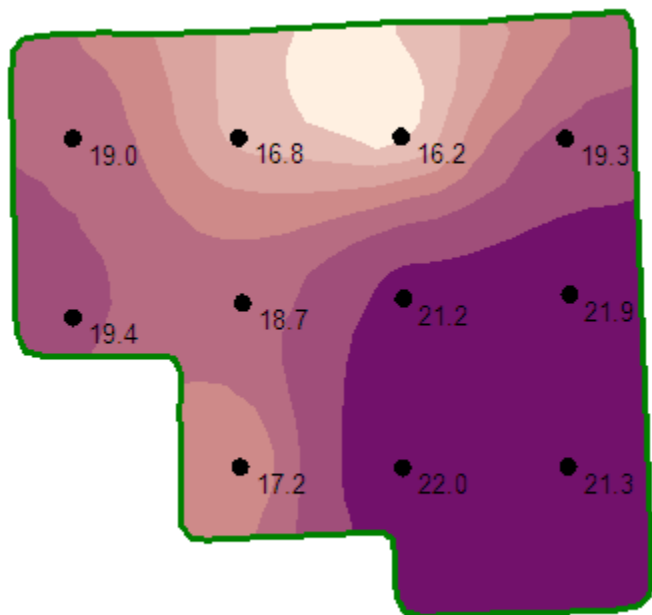
Season: 2014
Min: 3.99 ppm
Avg: 6.11 ppm
Max: 9.41 ppm

	Field Boundary
NO3-N - Absolute Variability ppm	
	4 - 5 (7.4 ac) (26.2 %)
	5 - 5.9 (6.6 ac) (23.4 %)
	5.9 - 6.7 (5.3 ac) (18.8 %)
	6.8 - 7.5 (3.7 ac) (12.9 %)
	7.5 - 7.9 (2.6 ac) (9.2 %)
	8 - 8.4 (1.7 ac) (6.0 %)
	8.5 - 9.4 (1.0 ac) (3.5 %)

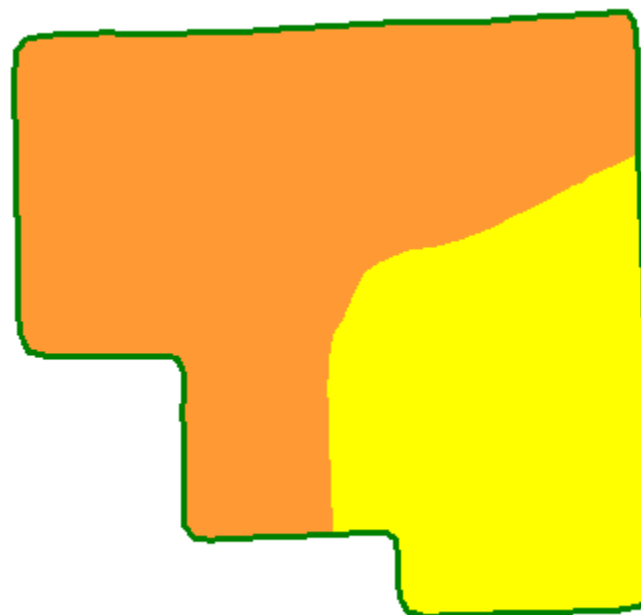
	Field Boundary
NO3-N - Agronomic Variability ppm	
	0 - 5 Extremely Deficient (7.3 ac) (25.9 %)
	5 - 10 Deficient (21.0 ac) (74.1 %)
	10 - 20 Slightly Deficient (0.0 ac) (0.0 %)
	20 - 30 Borderline Adequate (0.0 ac) (0.0 %)
	30 - 40 Adequate (0.0 ac) (0.0 %)
	> 40 Above Adequate (0.0 ac) (0.0 %)



P Olsen - Absolute Variability (2014)











P Olsen - Agronomic Variability (2014)










Grower:
Farm:
Field:
Area: 28.30 ac

Season: 2014
Min: 16.22 ppm
Avg: 19.38 ppm
Max: 22.00 ppm

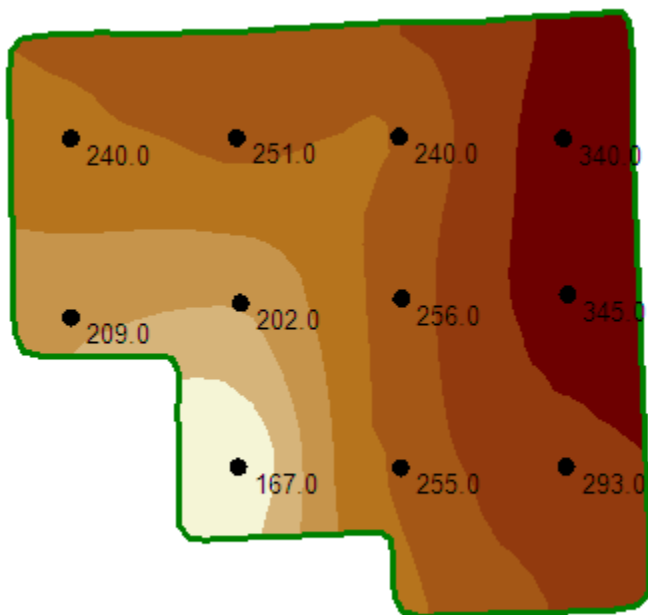
Season: 2014
Min: 16.22 ppm
Avg: 19.38 ppm
Max: 22.00 ppm

	Field Boundary
P Olsen - Absolute Variability ppm	
	16.2 - 16.5 (1.3 ac) (4.5 %)
	16.5 - 16.9 (1.7 ac) (6.0 %)
	17 - 17.5 (1.8 ac) (6.4 %)
	17.6 - 18.2 (3.2 ac) (11.2 %)
	18.3 - 19.1 (6.3 ac) (22.1 %)
	19.1 - 20.4 (4.3 ac) (15.4 %)
	20.5 - 22 (9.8 ac) (34.6 %)

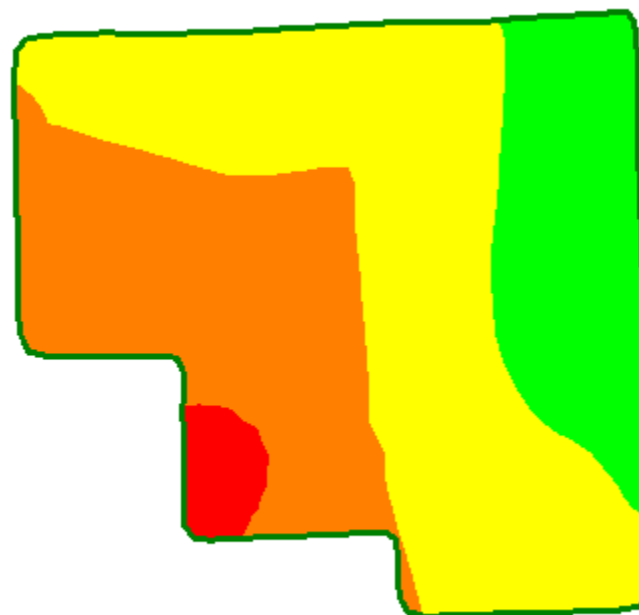
	Field Boundary
P Olsen - Agronomic Variability ppm	
	0 - 10 Extremely Deficient (0.0 ac) (0.0 %)
	10 - 15 Deficient (0.0 ac) (0.0 %)
	15 - 20 Slightly Deficient (17.7 ac) (62.4 %)
	20 - 30 Borderline Adequate (10.6 ac) (37.6 %)
	30 - 40 Adequate (0.0 ac) (0.0 %)
	> 40 Above Adequate (0.0 ac) (0.0 %)



K - Absolute Variability (2014)



K - Agronomic Variability (2014)



Grower:
Farm:
Field:
Area: 28.30 ac

Season: 2014
Min: 168.85 ppm
Avg: 258.43 ppm
Max: 350.20 ppm

—	Field Boundary
K - Absolute Variability ppm	
Light Yellow	168.9 - 184 (1.2 ac) (4.4 %)
Light Orange	188.8 - 202.3 (1.4 ac) (4.9 %)
Orange	203 - 219.5 (3.2 ac) (11.4 %)
Dark Orange	223.1 - 243.5 (5.1 ac) (17.9 %)
Brown	244.1 - 270 (7.6 ac) (27.0 %)
Dark Brown	271.6 - 313.4 (5.5 ac) (19.6 %)
Dark Red	314.6 - 350.2 (4.2 ac) (14.9 %)

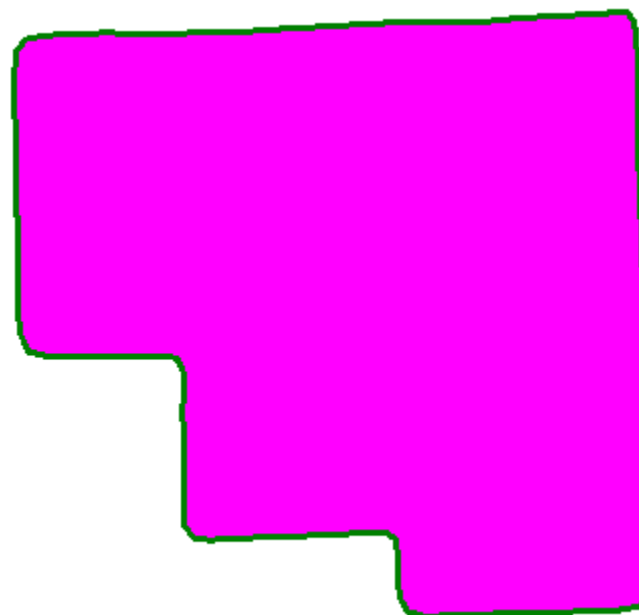
—	Field Boundary
K - Agronomic Variability ppm	
Pink	0 - 120 Extremely Deficient (0.0 ac) (0.0 %)
Red	120 - 180 Deficient (0.9 ac) (3.1 %)
Orange	180 - 240 Slightly Deficient (9.0 ac) (31.8 %)
Yellow	240 - 300 Borderline Adequate (12.8 ac) (45.3 %)
Green	300 - 360 Adequate (5.6 ac) (19.8 %)
Cyan	> 360 Above Adequate (0.0 ac) (0.0 %)



B - Absolute Variability (2014)



B - Agronomic Variability (2014)



Grower:
Farm:
Field:
Area: 28.30 ac

Season: 2014
Min: 0.15 ppm
Avg: 0.17 ppm
Max: 0.20 ppm

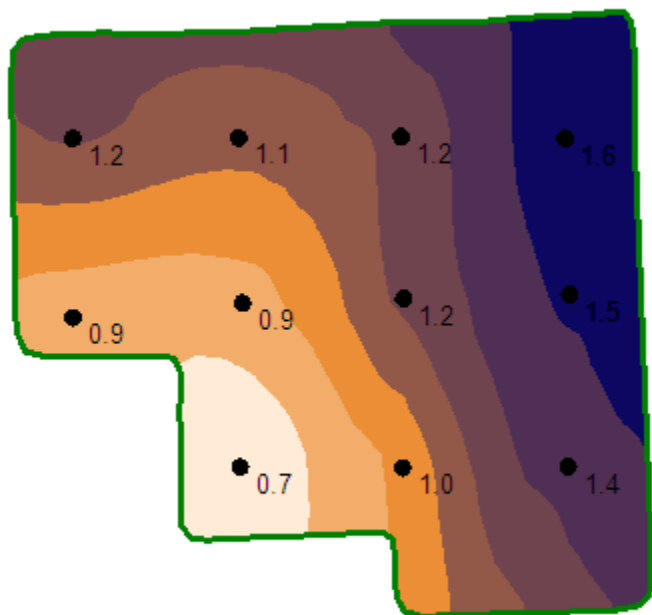
Season: 2014
Min: 0.15 ppm
Avg: 0.17 ppm
Max: 0.20 ppm

	Field Boundary
B - Absolute Variability ppm	
	0.15 - 0.16 (11.8 ac) (41.7 %)
	0.16 - 0.17 (6.8 ac) (24.1 %)
	0.17 - 0.18 (4.2 ac) (14.9 %)
	0.18 - 0.18 (2.7 ac) (9.6 %)
	0.19 - 0.19 (0.9 ac) (3.0 %)
	0.19 - 0.19 (1.1 ac) (3.8 %)
	0.2 - 0.2 (0.8 ac) (2.8 %)

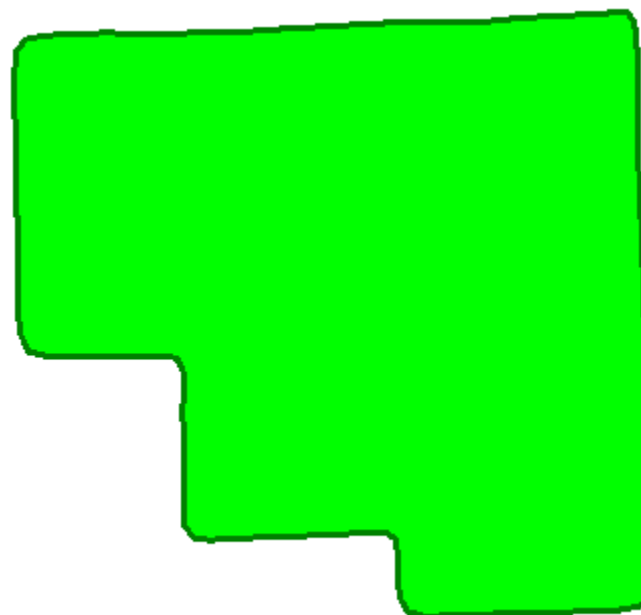
	Field Boundary
B - Agronomic Variability ppm	
	0.0 - 0.2 Extremely Deficient (28.3 ac) (100.0 %)
	0.2 - 0.3 Deficient (0.0 ac) (0.0 %)
	0.3 - 0.4 Slightly Deficient (0.0 ac) (0.0 %)
	0.4 - 0.5 Borderline Adequate (0.0 ac) (0.0 %)
	0.5 - 1.0 Adequate (0.0 ac) (0.0 %)
	> 1 Above Adequate (0.0 ac) (0.0 %)



Cu - Absolute Variability (2014)



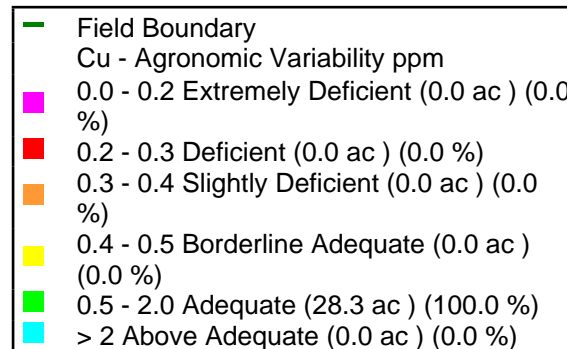
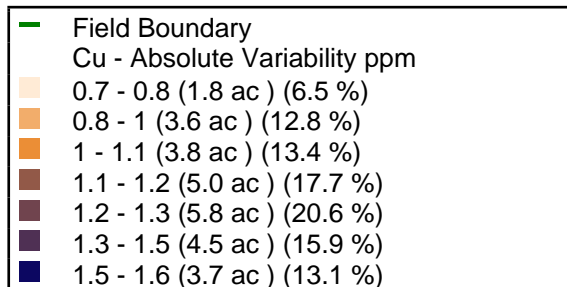
Cu - Agronomic Variability (2014)



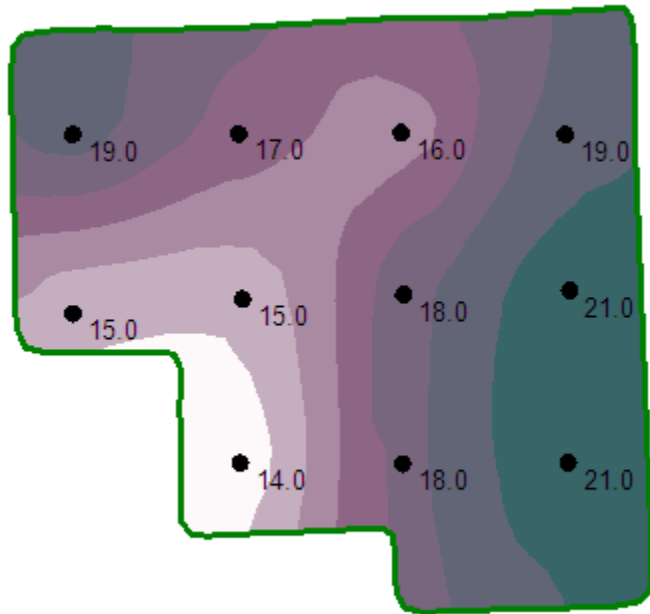
Grower:
Farm:
Field:
Area: 28.30 ac

Season: 2014
Min: 0.71 ppm
Avg: 1.18 ppm
Max: 1.62 ppm

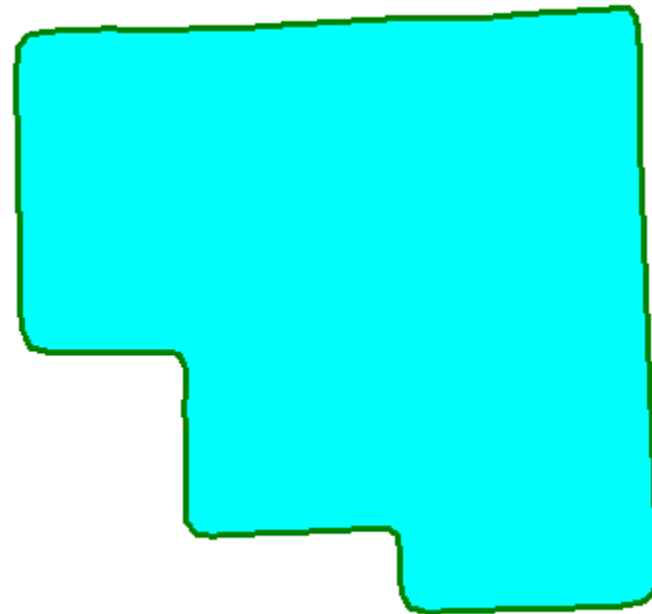
Season: 2014
Min: 0.71 ppm
Avg: 1.18 ppm
Max: 1.62 ppm



Fe - Absolute Variability (2014)



Fe - Agronomic Variability (2014)



Grower:
Farm:
Field:
Area: 28.30 ac

Season: 2014
Min: 14.01 ppm
Avg: 17.76 ppm
Max: 21.33 ppm

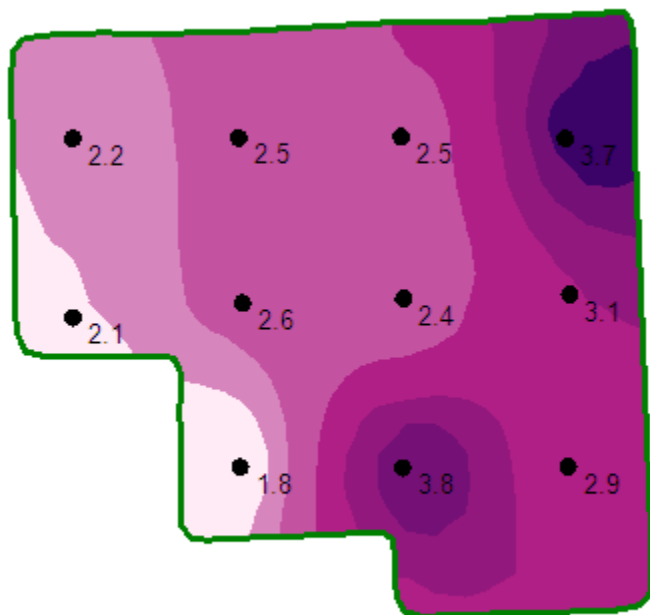
Season: 2014
Min: 14.01 ppm
Avg: 17.76 ppm
Max: 21.33 ppm

Field Boundary	Fe - Absolute Variability ppm
	14 - 15 (1.5 ac) (5.4 %)
	15 - 16 (2.8 ac) (9.8 %)
	16 - 17 (3.8 ac) (13.4 %)
	17 - 17 (4.8 ac) (17.1 %)
	17 - 18 (4.6 ac) (16.3 %)
	18 - 20 (5.8 ac) (20.6 %)
	20 - 21 (4.9 ac) (17.5 %)

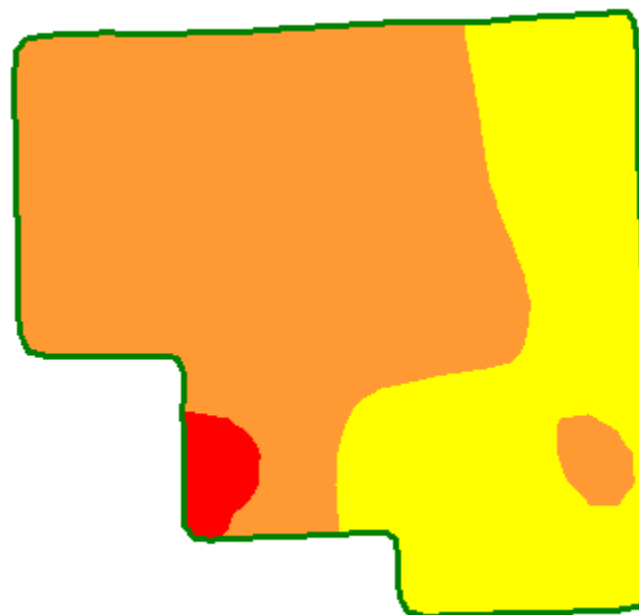
Field Boundary	Fe - Agronomic Variability ppm
	0 - 2 Extremely Deficient (0.0 ac) (0.0 %)
	2 - 4 Deficient (0.0 ac) (0.0 %)
	4 - 6 Slightly Deficient (0.0 ac) (0.0 %)
	6 - 8 Borderline Adequate (0.0 ac) (0.0 %)
	8 - 10 Adequate (0.0 ac) (0.0 %)
	> 10 Above Adequate (28.3 ac) (100.0 %)



Mn - Absolute Variability (2014)



Mn - Agronomic Variability (2014)



Grower:
Farm:
Field:
Area: 28.30 ac

Season: 2014
Min: 1.83 ppm
Avg: 2.75 ppm
Max: 3.73 ppm

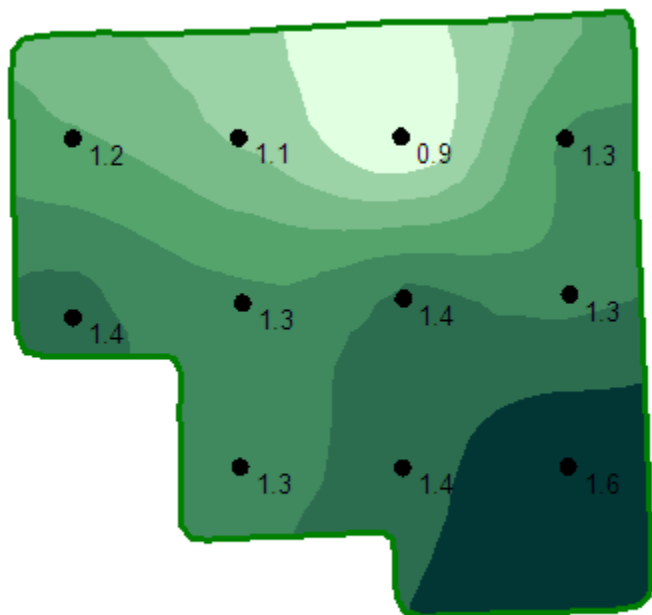
Season: 2014
Min: 1.83 ppm
Avg: 2.75 ppm
Max: 3.73 ppm

Field Boundary	
Mn - Absolute Variability ppm	
1.8 - 2.1 (2.2 ac) (7.8 %)	
2.1 - 2.4 (4.5 ac) (15.8 %)	
2.4 - 2.8 (8.9 ac) (31.4 %)	
2.8 - 3.1 (7.1 ac) (25.1 %)	
3.2 - 3.4 (3.2 ac) (11.3 %)	
3.4 - 3.6 (1.2 ac) (4.3 %)	
3.6 - 3.7 (1.2 ac) (4.2 %)	

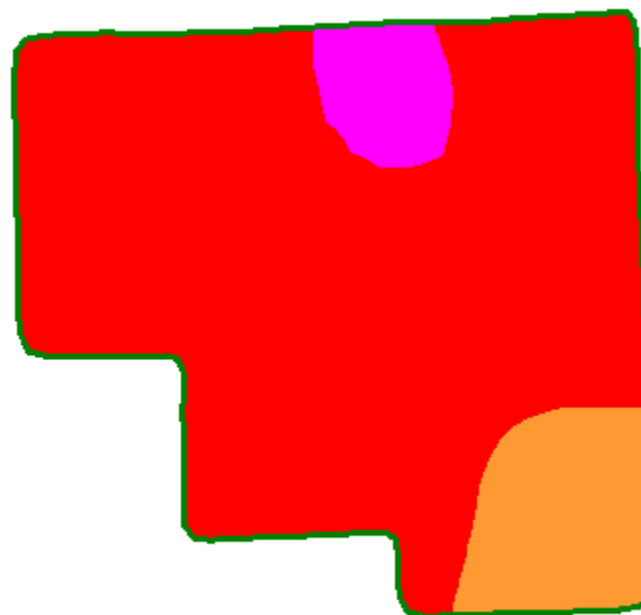
Field Boundary	
Mn - Agronomic Variability ppm	
0 - 1 Extremely Deficient (0.0 ac) (0.0 %)	
1 - 2 Deficient (0.9 ac) (3.0 %)	
2 - 3 Slightly Deficient (17.1 ac) (60.4 %)	
3 - 4 Borderline Adequate (10.4 ac) (36.6 %)	
4 - 10 Adequate (0.0 ac) (0.0 %)	
> 10 Above Adequate (0.0 ac) (0.0 %)	



Zn - Absolute Variability (2014)



Zn - Agronomic Variability (2014)



Grower:
Farm:
Field:
Area: 28.30 ac

Season: 2014
Min: 0.92 ppm
Avg: 1.29 ppm
Max: 1.59 ppm

Season: 2014
Min: 0.92 ppm
Avg: 1.29 ppm
Max: 1.59 ppm

—	Field Boundary
Zn - Absolute Variability ppm	
Lightest Green	0.9 - 1 (2.0 ac) (6.9 %)
Light Green	1 - 1.1 (2.5 ac) (8.7 %)
Medium-Light Green	1.1 - 1.2 (3.4 ac) (12.2 %)
Medium Green	1.2 - 1.3 (4.0 ac) (14.0 %)
Medium-Dark Green	1.3 - 1.4 (7.3 ac) (25.9 %)
Dark Green	1.4 - 1.5 (5.1 ac) (18.0 %)
Darkest Green	1.5 - 1.6 (4.0 ac) (14.3 %)

—	Field Boundary
Zn - Agronomic Variability ppm	
Magenta	0 - 1 Extremely Deficient (1.7 ac) (5.9 %)
Red	1 - 1.5 Deficient (23.4 ac) (82.6 %)
Orange	1.5 - 2 Slightly Deficient (3.3 ac) (11.5 %)
Yellow	2 - 2.5 Borderline Adequate (0.0 ac) (0.0 %)
Light Green	2.5 - 3 Adequate (0.0 ac) (0.0 %)
Cyan	> 3 Above Adequate (0.0 ac) (0.0 %)



ESP - Absolute Variability (2014)



ESP - Agronomic Variability (2014)



Grower:
Farm:
Field:
Area: 28.30 ac

Season: 2014
Min: 2.15 Percent
Avg: 2.40 Percent
Max: 2.81 Percent

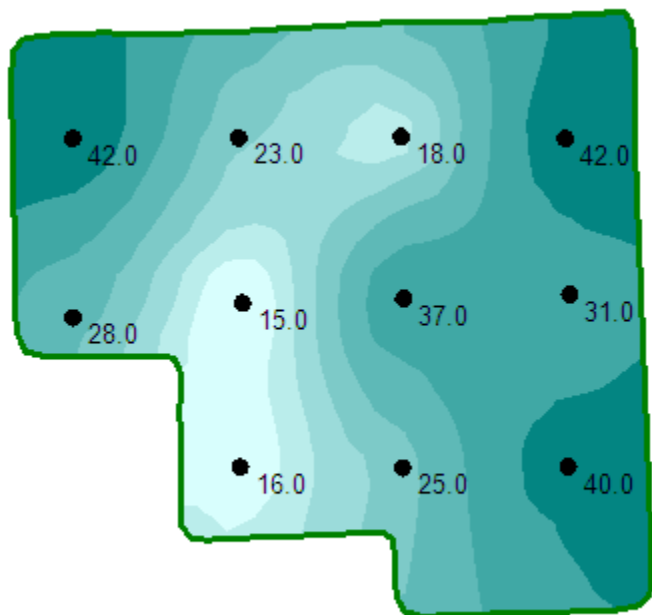
Field Boundary	ESP - Absolute Variability Percent
Light Green	2.2 - 2.3 (8.9 ac) (31.3 %)
Medium Green	2.3 - 2.4 (6.1 ac) (21.5 %)
Dark Green	2.4 - 2.5 (6.9 ac) (24.4 %)
Very Dark Green	2.5 - 2.6 (2.5 ac) (8.9 %)
Brown	2.6 - 2.7 (2.6 ac) (9.2 %)
Dark Brown	2.7 - 2.8 (0.7 ac) (2.6 %)
Red	2.8 - 2.8 (0.6 ac) (2.0 %)

Season: 2014
Min: 2.15 Percent
Avg: 2.40 Percent
Max: 2.81 Percent

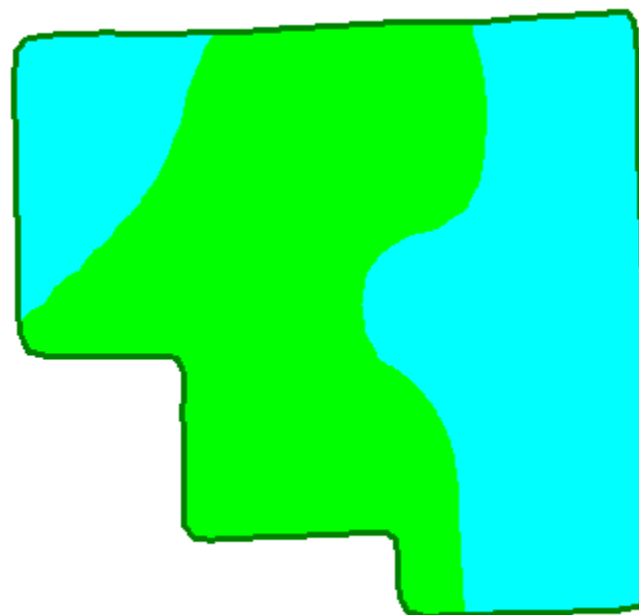
Field Boundary	ESP - Agronomic Variability Percent
Light Green	0 - 2 Low Sodicty (0.0 ac) (0.0 %)
Green	2 - 5 Slight Sodicty (28.3 ac) (100.0 %)
Yellow	5 - 10 Moderate Sodicty (0.0 ac) (0.0 %)
Red	10 - 15 High Sodicty (0.0 ac) (0.0 %)
Dark Brown	> 15 Sodicty (0.0 ac) (0.0 %)



S - Absolute Variability (2014)



S - Agronomic Variability (2014)



Grower:
Farm:
Field:
Area: 28.30 ac

Season: 2014
Min: 15.79 ppm
Avg: 29.34 ppm
Max: 41.68 ppm

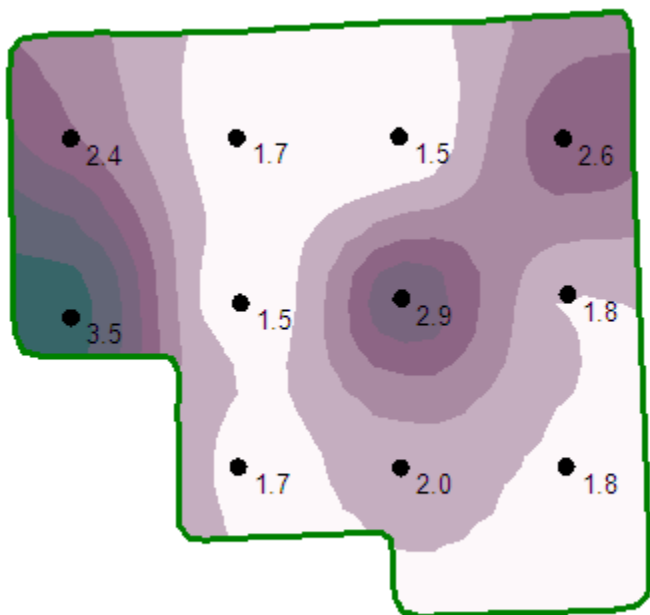
Season: 2014
Min: 15.79 ppm
Avg: 29.34 ppm
Max: 41.68 ppm

Field Boundary	
S - Absolute Variability ppm	
Lightest Blue	16 - 18 (2.0 ac) (7.0 %)
Light Blue	18 - 20 (1.9 ac) (6.6 %)
Medium-Light Blue	20 - 23 (3.3 ac) (11.6 %)
Medium Blue	23 - 26 (3.5 ac) (12.2 %)
Medium-Dark Blue	27 - 31 (4.5 ac) (15.9 %)
Dark Blue	31 - 36 (7.9 ac) (27.9 %)
Darkest Blue	37 - 42 (5.3 ac) (18.8 %)

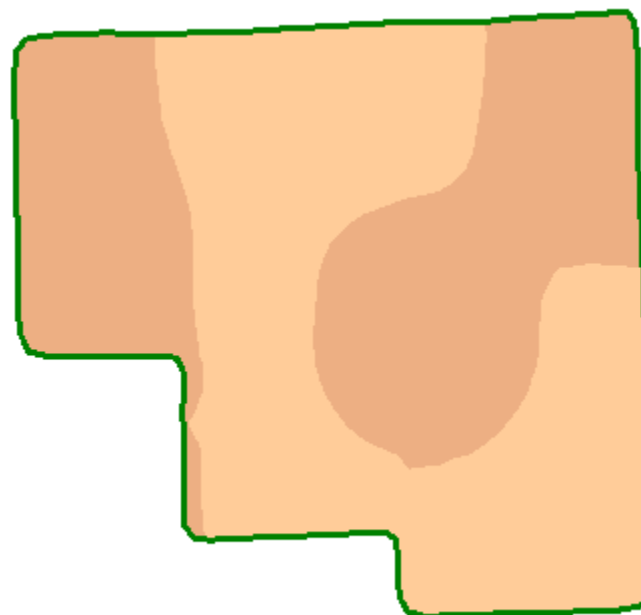
Field Boundary	
S - Agronomic Variability ppm	
Magenta	0 - 2 Extremely Deficient (0.0 ac) (0.0 %)
Red	2 - 5 Deficient (0.0 ac) (0.0 %)
Orange	5 - 10 Slightly Deficient (0.0 ac) (0.0 %)
Yellow	10 - 15 Borderline Adequate (0.0 ac) (0.0 %)
Green	15 - 30 Adequate (14.2 ac) (50.1 %)
Cyan	> 30 Above Adequate (14.1 ac) (49.9 %)



Cl (meq/L) - Absolute Variability (2014)



Cl (meq/L) - Agronomic Variability (2014)



Grower:
Farm:
Field:
Area: 28.30 ac

Season: 2014
Min: 1.53 meq/L
Avg: 2.07 meq/L
Max: 3.40 meq/L

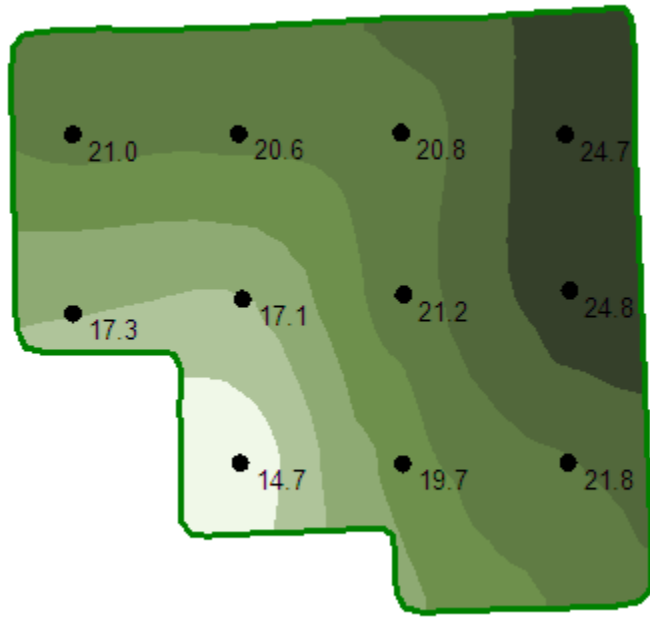
Season: 2014
Min: 1.53 meq/L
Avg: 2.07 meq/L
Max: 3.40 meq/L

Field Boundary	
Cl (meq/L) - Absolute Variability meq/L	
1.5 - 1.9 (11.1 ac) (39.3 %)	
1.9 - 2.1 (7.2 ac) (25.5 %)	
2.1 - 2.4 (4.6 ac) (16.2 %)	
2.4 - 2.6 (2.8 ac) (9.8 %)	
2.6 - 2.8 (1.4 ac) (4.8 %)	
2.9 - 3.1 (0.6 ac) (2.1 %)	
3.2 - 3.4 (0.7 ac) (2.3 %)	

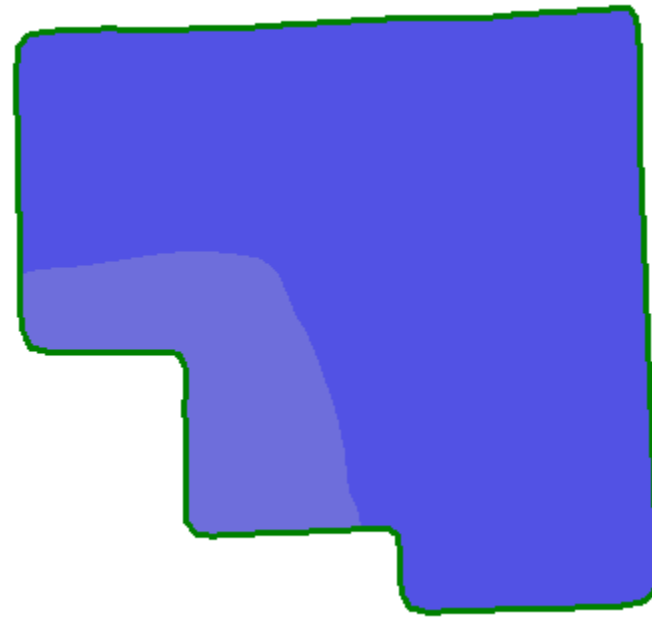
Field Boundary	
Cl (meq/L) - Agronomic Variability meq/L	
0 - 2 Low (15.3 ac) (53.9 %)	
2 - 4 (13.0 ac) (46.1 %)	
4 - 6 (0.0 ac) (0.0 %)	
6 - 8 Moderate (0.0 ac) (0.0 %)	
8 - 10 (0.0 ac) (0.0 %)	
10 - 12 (0.0 ac) (0.0 %)	
> 12 High (0.0 ac) (0.0 %)	



CEC - Absolute Variability (2014)



CEC - Agronomic Variability (2014)



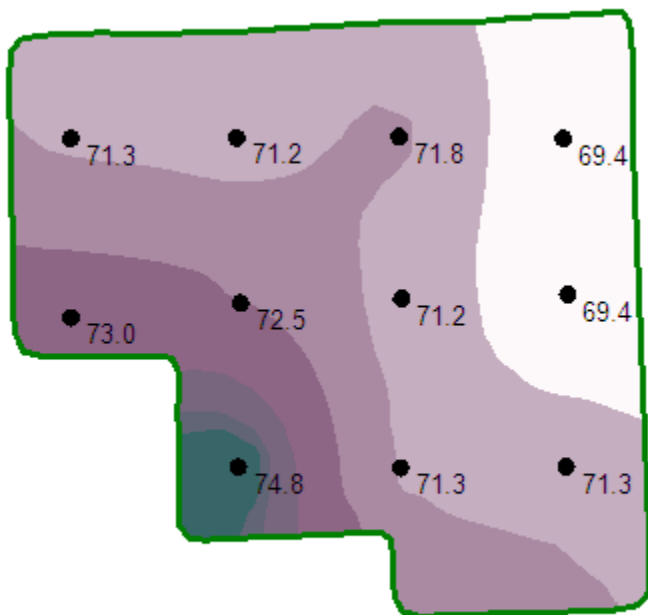
Grower:
 Farm:
 Field:
 Area: 28.30 ac
 Season: 2014
 Min: 14.75 meq/100 g
 Avg: 20.56 meq/100 g
 Max: 25.03 meq/100 g

Field Boundary	CEC - Absolute Variability meq/100 g
Lightest Green	14.8 - 15.7 (1.2 ac) (4.4 %)
Light Green	16 - 17.3 (2.2 ac) (7.7 %)
Medium-Light Green	17.3 - 18.7 (3.3 ac) (11.5 %)
Medium Green	18.8 - 20.2 (4.3 ac) (15.0 %)
Medium-Dark Green	20.3 - 21.8 (9.6 ac) (33.8 %)
Dark Green	21.9 - 23.5 (3.7 ac) (13.2 %)
Darkest Green	23.6 - 25 (4.1 ac) (14.4 %)

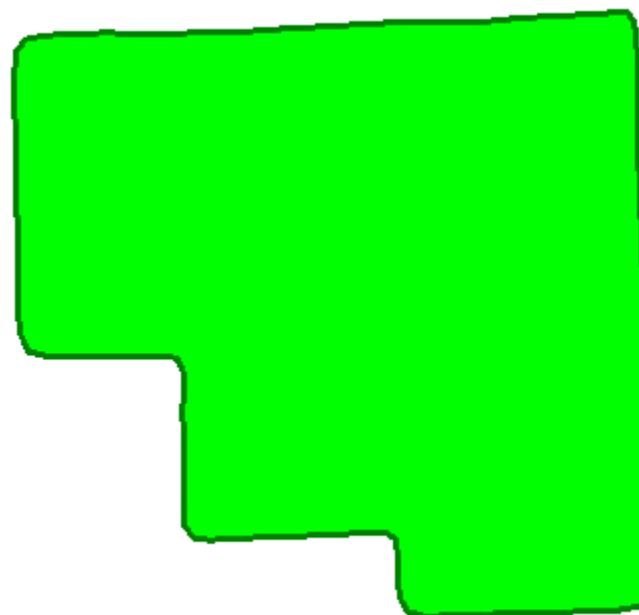
Field Boundary	CEC - Agronomic Variability meq/100 g
Lightest Blue	Low (0.0 ac) (0.0 %)
Light Blue	3 - 6 (0.0 ac) (0.0 %)
Medium Blue	6 - 12 (0.0 ac) (0.0 %)
Dark Blue	Moderate (4.9 ac) (17.2 %)
Very Dark Blue	18 - 30 (23.4 ac) (82.8 %)
Darkest Blue	30 - 45 (0.0 ac) (0.0 %)
Black	High (0.0 ac) (0.0 %)



Ca % - Absolute Variability (2014)



Ca % - Agronomic Variability (2014)



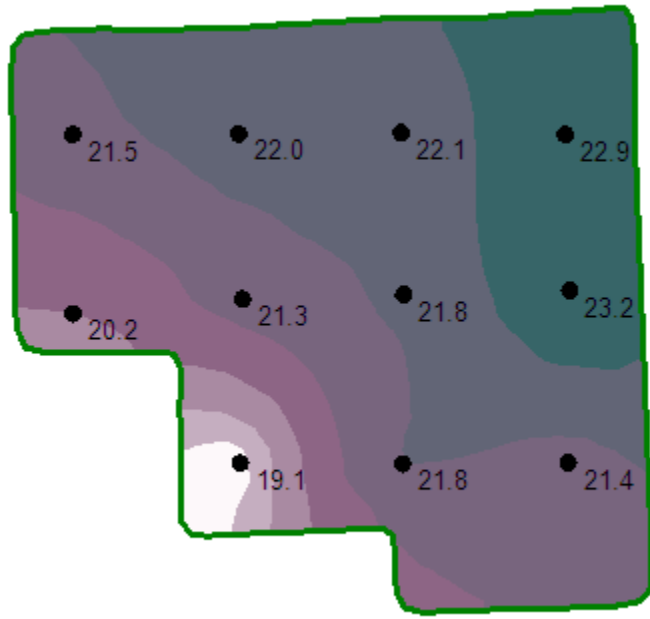
Grower:
 Farm:
 Field:
 Area: 28.30 ac
 Season: 2014
 Min: 69.22 Percent
 Avg: 71.44 Percent
 Max: 74.77 Percent

	Field Boundary
Ca % - Absolute Variability Percent	
	69.2 - 70.4 (5.4 ac) (19.1 %)
	70.5 - 71.5 (11.2 ac) (39.5 %)
	71.5 - 72.5 (7.0 ac) (24.8 %)
	72.5 - 73.5 (3.1 ac) (11.0 %)
	73.6 - 74.1 (0.6 ac) (2.1 %)
	74.3 - 74.3 (0.3 ac) (1.0 %)
	74.5 - 74.8 (0.7 ac) (2.5 %)

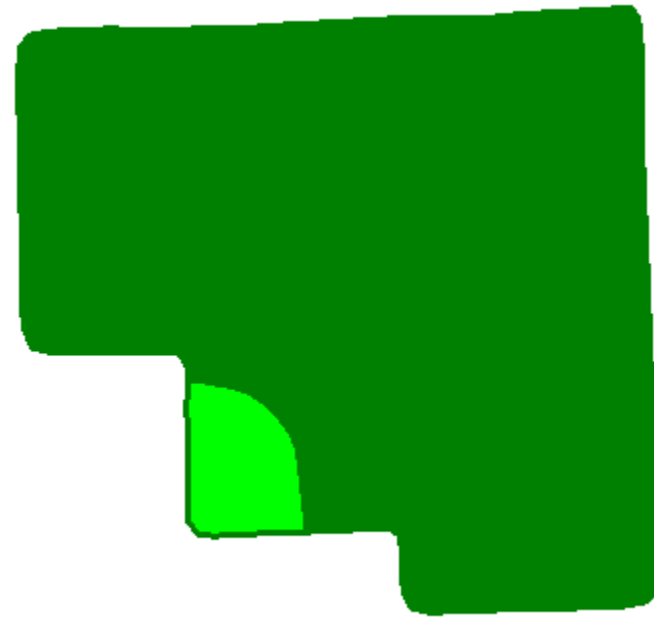
	Field Boundary
Ca % - Agronomic Variability Percent	
	Extremely Low (0.0 ac) (0.0 %)
	Low (0.0 ac) (0.0 %)
	Slightly Low (0.0 ac) (0.0 %)
	Optimum (28.3 ac) (100.0 %)
	Moderately High (0.0 ac) (0.0 %)
	High (0.0 ac) (0.0 %)



Mg % - Absolute Variability (2014)



Mg % - Agronomic Variability (2014)



Grower:
 Farm:
 Field:
 Area: 28.30 ac
 Season: 2014
 Min: 19.15 Percent
 Avg: 21.66 Percent
 Max: 23.10 Percent

Field Boundary	
Mg % - Absolute Variability Percent	
Lightest Purple	19.2 - 19.3 (0.5 ac) (1.9 %)
Light Purple	19.3 - 19.6 (0.4 ac) (1.6 %)
Medium Purple	19.8 - 20.2 (1.1 ac) (3.7 %)
Dark Purple	20.3 - 21 (3.0 ac) (10.6 %)
Very Dark Purple	21 - 21.7 (8.9 ac) (31.3 %)
Dark Blue-Gray	21.7 - 22.5 (9.3 ac) (33.0 %)
Teal	22.5 - 23.1 (5.1 ac) (17.9 %)

Field Boundary	
Mg % - Agronomic Variability Percent	
Red	Extremely Low (0.0 ac) (0.0 %)
Orange	Low (0.0 ac) (0.0 %)
Yellow	Slightly Low (0.0 ac) (0.0 %)
Cyan	Optimum (1.5 ac) (5.4 %)
Green	Moderately High (26.8 ac) (94.6 %)
Light Blue	High (0.0 ac) (0.0 %)



K % - Absolute Variability (2014)



K % - Agronomic Variability (2014)



Grower:
 Farm:
 Field:
 Area: 28.30 ac

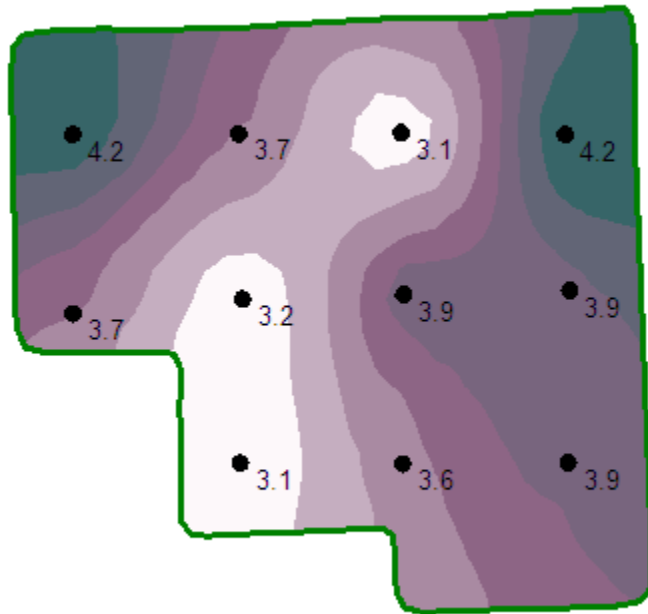
 Season: 2014
 Min: 2.92 Percent
 Avg: 3.19 Percent
 Max: 3.59 Percent

Field Boundary	
K % - Absolute Variability Percent	
2.9 - 3	(4.1 ac) (14.4 %)
3 - 3.1	(10.3 ac) (36.5 %)
3.1 - 3.2	(2.8 ac) (10.0 %)
3.2 - 3.3	(1.8 ac) (6.5 %)
3.3 - 3.4	(2.9 ac) (10.3 %)
3.4 - 3.5	(3.9 ac) (13.7 %)
3.5 - 3.6	(2.4 ac) (8.6 %)

Field Boundary	
K % - Agronomic Variability Percent	
Extremely Low	(0.0 ac) (0.0 %)
Low	(4.1 ac) (14.4 %)
Slightly Low	(24.2 ac) (85.6 %)
Optimum	(0.0 ac) (0.0 %)
Moderately High	(0.0 ac) (0.0 %)
High	(0.0 ac) (0.0 %)



Na % - Absolute Variability (2014)



Na % - Agronomic Variability (2014)



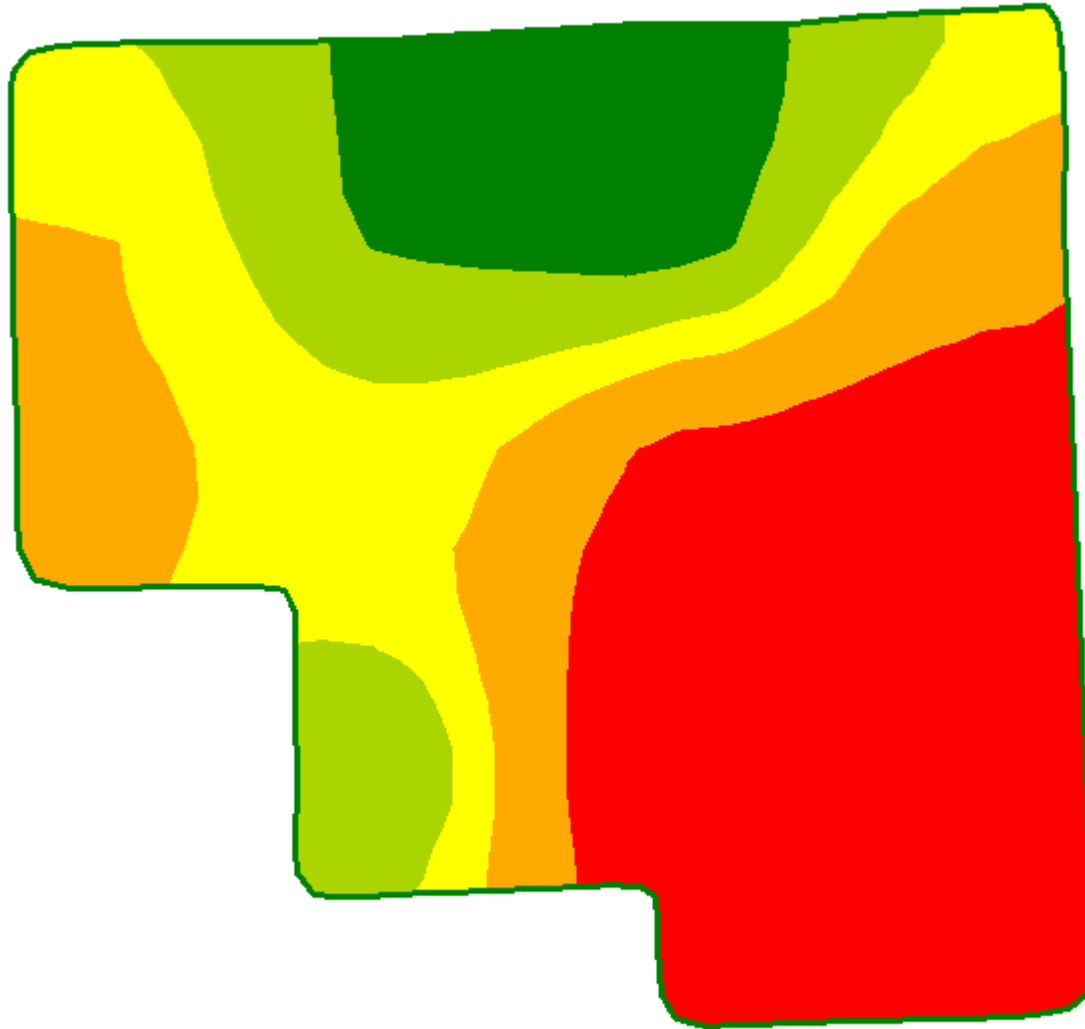
Grower:
 Farm:
 Field:
 Area: 28.30 ac
 Season: 2014
 Min: 3.14 Percent
 Avg: 3.69 Percent
 Max: 4.22 Percent

Field Boundary	Na % - Absolute Variability Percent
Lightest Purple	3.1 - 3.3 (3.2 ac) (11.5 %)
Light Purple	3.3 - 3.5 (4.2 ac) (14.9 %)
Medium-Light Purple	3.5 - 3.7 (5.0 ac) (17.5 %)
Medium Purple	3.7 - 3.8 (4.9 ac) (17.3 %)
Medium-Dark Purple	3.8 - 3.9 (6.0 ac) (21.1 %)
Dark Purple	3.9 - 4.1 (2.2 ac) (7.7 %)
Darkest Purple	4.1 - 4.2 (2.8 ac) (10.0 %)

Field Boundary	Na % - Agronomic Variability Percent
Light Green	Low Sodicty (0.0 ac) (0.0 %)
Green	Slight Sodicty (28.3 ac) (100.0 %)
Yellow-Green	Moderate Sodicty (0.0 ac) (0.0 %)
Red	High Sodicty (0.0 ac) (0.0 %)
Brown	Sodicty (0.0 ac) (0.0 %)



P Rec



Grower:
Farm:
Field:
Area: 28.30 ac

Season: 2014
Min Rate: 325.67 lb/ac
Avg Rate: 385.60 lb/ac
Max Rate: 457.76 lb/ac
Total Product: 10,912.71 lb
Applied Area: 28.30 ac
Product: 11-52-0 MAP
Order Id:
Order Task Id:
Crop - Year 1
Purpose - Year 1:
Task:

—	Field Boundary
■	P2O5 Recommendation lb/ac
■	325.7 - 361.9 (10.0 ac) (35.5 %)
■	363.3 - 394 (4.9 ac) (17.2 %)
■	394.5 - 412.7 (5.7 ac) (20.1 %)
■	413.2 - 437.1 (4.4 ac) (15.7 %)
■	439 - 457.8 (3.3 ac) (11.6 %)

